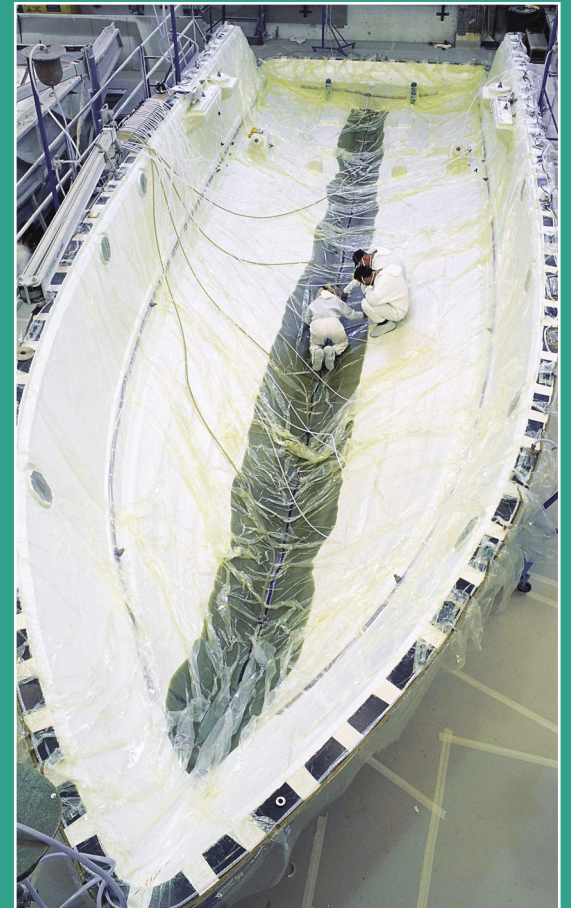


2006 International Sandwich Symposium

APRIL 20TH - 2006 - SEATTLE - WA - USA



MAIN THEME

- *Coring Hull Bottoms* -

for more information please contact:

Carla Meadows

**2006 International Sandwich Symposium for
Naval Architects, Surveyors & Engineers**

Tel: +1 (972) 228-7694

Fax: +1 (972) 224-9428

E-Mail: carla.meadows@btconnect.com

sponsored by:

DIAB

www.diabgroup.com

affix
stamp
here

Carla Meadows

2006 International Sandwich Seminar

315 Seahawk Drive

DeSoto

Texas 75115

USA

2006 International Sandwich Symposium

APRIL 20TH - 2006 - SEATTLE - WASHINGTON - USA

A Must for Naval Architects, Surveyors & Composite Engineers

What it is about

More and more boatbuilders around the world are switching to fully-cored hulls, often in conjunction with a move to closed molding techniques such as infusion - and the trend is accelerating. To review all aspects of the subject the symposium organizers have gathered together an international panel of independent speakers who can talk with authority on design, engineering, process methodology, construction and marketing. The aim is to dispel the myths, examine the benefits, consider the processing options, review actual applications and discuss the marketing advantages of the concept.



Who it is for



This intensive one day symposium is aimed squarely at technical personnel who are involved in the design, engineering, construction and accreditation of grp/composite boats whether they be for leisure, commercial or military applications. Naval architects, surveyors, structural engineers and production management personnel are the key target audience.

The venue

The event will be held at the Grand Hyatt in Seattle (<http://grandseattle.hyatt.com>). In addition to being one of the finest hotels in downtown Seattle, the Grand Hyatt boasts the superb Eliza Anderson Amphitheater that provides the perfect facilities for an event of this type.



Registration & cost

The event is strictly limited to a maximum of 150 people. To register for the symposium, please fill in the attached form and send it by mail, fax or E-mail to Carla Meadows. The symposium fee is US\$ 600. It includes copies of all papers, breakfast, buffet lunch and all refreshments. All bookings received before February 28th. will receive a 25% 'early-bird' discount.

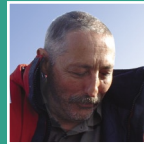
The Speakers

Coring Hull Bottoms - Dispelling the Myths - David Lyons

David Lyons, P.Eng., BE(Hons), AMSNAME, AMRINA, has designed more than fifty sailboats - the majority in full sandwich construction. In 2004 he broadened his business into a turnkey engineering consultancy that is centered around composite materials technology.



Building Fully-Cored Rescue Boats - Rolf Eliasson



Co-author of one of the standard reference works 'Principles of Yacht Design', Rolf Eliasson, B.Sc., M.A., has designed well over 100 vessels ranging in length from 8 to 73 ft. In his paper he will describe in detail two projects that were recently undertaken for the Swedish Sea Rescue Society.

The Why & How of Vaccum Infusion - Gordon Lacy

Gordon Lacy, M.NA., P.Eng., has been at the forefront of the development of vacuum infusion. He helped found the Vacuum Infusion Group and is continuing to further develop the process with the Canadian National Research Council.



Fully-Cored Hulls Using Infusion - Giuseppe Coccia



Giuseppe Coccia, Ph. D., has been instrumental in moving Fiat Mare, the Italian builder of pleasure craft, to cored hulls using infusion molding. He will explain how the transition was accomplished and present a detailed analysis of the 'pros' and 'cons' against hand lay-up.

How to Successfully Market a Fully-Cored Hull - Jorge Nasseh

Since 1994 Jorge Nasseh, B.Sc., M.Sc. MBA, Ph. D., has been Vice-President of the Brazilian Boatbuilding Association and is the Chairman of the Brazilian Committee for the National Rules of GRP Boat Construction. He will explain how to make the most of going fully-cored.



2006 International Sandwich Symposium - registration card

Please register me as a delegate:

Name _____ Position _____
Company _____ Business Type _____
Address _____
City _____ State _____ Country _____ Zip/Post Code _____
Phone _____ Fax _____ E-mail _____

Please mail or fax this card, or alternatively telephone or email Carla Meadows.
Fax: 972-224-9428 Telephone: 972-228-7694 E-mail: carla.meadows@btconnect.com